



OFFERS IN THE REGION OF

**£775,000**

**Kings Grove**

London, SE15 2NA

**GARETH  
JAMES**

## PROPERTY SUMMARY

Recently refurbished to an exceptional, design-led standard and extending to approximately 849 sq ft, this exquisite two-bedroom apartment offers a rare blend of volume, light and refined contemporary living. Further enhanced by its own private entrance and a beautifully landscaped west-facing garden, the property presents a truly turnkey opportunity.

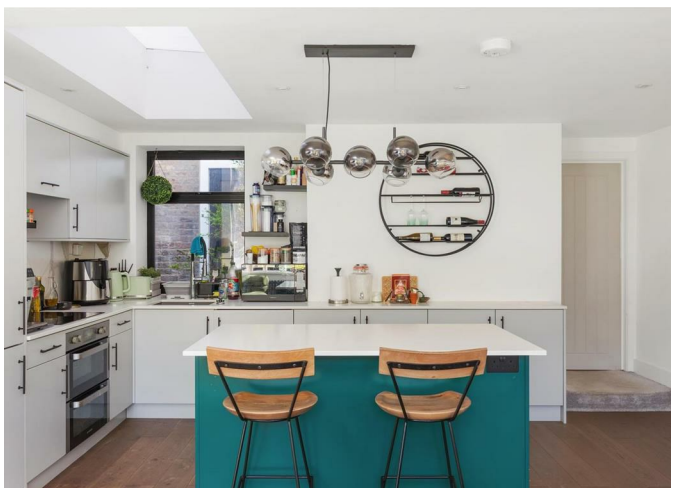
2



1



1











Lower Ground Floor  
849 sq ft

Illustration for identification purposes only. Not to scale.  
Floor Plan Drawn According To RICS Guidelines.

2

1

1

Energy Efficiency Rating		
	Current	Potential
Very energy efficient - lower running costs		
(92 plus) <b>A</b>		
(81-91) <b>B</b>		
(69-80) <b>C</b>	76	78
(55-68) <b>D</b>		
(39-54) <b>E</b>		
(21-38) <b>F</b>		
(1-20) <b>G</b>		
Not energy efficient - higher running costs		
<b>England &amp; Wales</b>	EU Directive 2002/91/EC	

Agents Note: Whilst every care has been taken to prepare these particulars, they are for guidance purposes only. All measurements are approximate and are for general guidance purposes only and whilst every care has been taken to ensure their accuracy, they should not be relied upon and potential buyers/tenants are advised to recheck the measurements

**GARETH JAMES**

OFFICE ADDRESS  
129 Bellenden Road  
London  
SE15 4QY

OFFICE DETAILS  
02077324330  
sales@garethjames.com  
<https://www.garethjames.com/>